



351 N Air Depot Blvd, Ste. C  
Midwest City, Oklahoma, 73110  
Questions@405analytical.com  
(405) 548-5734

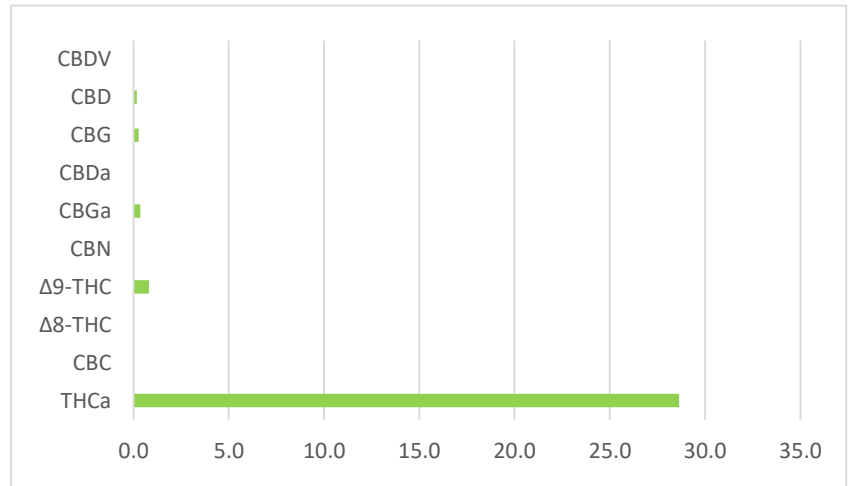
# CERTIFICATE OF ANALYSIS

Project **MEDICAL CANNABIS**  
 Sample ID **21L06FLW003**  
 Customer Name **788 TECHNOLOGIES**  
 Customer License **GAAA-NJUN-ZIFB**  
 Sample Matrix **FLOWER**  
 Strain/Description **PRIMOTIVO OG**  
 Customer Batch ID **G21326F-130-DAAA**  
 Date Sampled **12/6/2021**  
 Sampling Method **CUSTOMER SUPPLIED**  
 Quantity Received (g) **3.05**  
 Date Completed **12/8/2021**



Total % THC	Total % CBD	Total % Terpenes
<b>25.93</b>	<b>0.17</b>	<b>2.86</b>

Cannabinoids	mg/g	%
CBDV	<LOQ	<LOQ
CBD	<b>1.72</b>	<b>0.17</b>
CBG	<b>2.67</b>	<b>0.27</b>
CBDa	<LOQ	<LOQ
CBGa	<b>3.50</b>	<b>0.35</b>
CBN	<LOQ	<LOQ
Δ9-THC	<b>8.17</b>	<b>0.82</b>
Δ8-THC	<LOQ	<LOQ
CBC	<LOQ	<LOQ
THCa	<b>286.38</b>	<b>28.64</b>
<b>Total Cannabinoids</b>	<b>302.44</b>	<b>30.24</b>




















Total THC%=(0.877xTHCa%) + Δ9-THC%

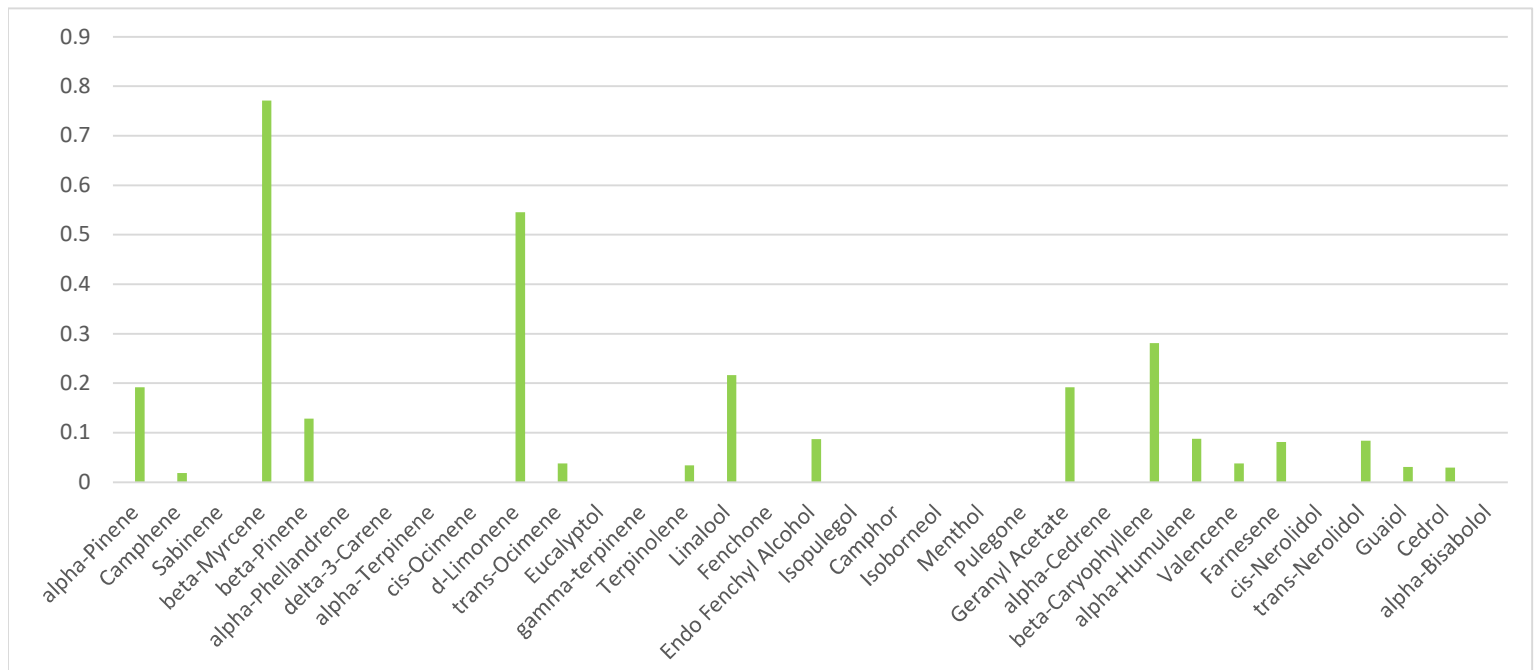
Total CBD%=(0.877xCBDa%) + CBD%

Total THC prod=NetWt(g) x mgTHC

Project **MEDICAL CANNABIS**  
 Sample ID **21L06FLW003**  
 Customer Name **788 TECHNOLOGIES**  
 Sample Matrix **FLOWER**  
 Strain/Description **PRIMOTIVO OG**

Batch ID **G21326F-130-DAAA**  
 Date Sampled **12/6/2021**  
 Sampling Method **CUSTOMER SUPPLIED**  
 Quantity Received **3.05**  
 Date Completed **12/8/2021**

Terpenes	mg/g	%		Terpenes	mg/g	%	
alpha-Pinene	1.92	0.19		Isopulegol	<LOQ	<LOQ	
Camphene	0.18	0.02		Camphor	<LOQ	<LOQ	
Sabinene	<LOQ	<LOQ		Isoborneol	<LOQ	<LOQ	
beta-Myrcene	7.71	0.77		Menthol	<LOQ	<LOQ	
beta-Pinene	1.29	0.13		Pulegone	<LOQ	<LOQ	
alpha-Phellandrene	<LOQ	<LOQ		Geranyl Acetate	1.92	0.19	
delta-3-Carene	<LOQ	<LOQ		alpha-Cedrene	<LOQ	<LOQ	
alpha-Terpinene	<LOQ	<LOQ		beta-Caryophyllene	2.81	0.28	
cis-Ocimene	<LOQ	<LOQ		alpha-Humulene	0.88	0.09	
d-Limonene	5.45	0.55		Valencene	0.38	0.04	
trans-Ocimene	0.38	0.04		Farnesene	0.81	0.08	
Eucalyptol	<LOQ	<LOQ		cis-Nerolidol	<LOQ	<LOQ	
gamma-terpinene	<LOQ	<LOQ		trans-Nerolidol	0.84	0.08	
Terpinolene	0.34	0.03		Guaiol	0.31	0.03	
Linalool	2.16	0.22		Cedrol	0.29	0.03	
Fenchone	<LOQ	<LOQ		alpha-Bisabolol	<LOQ	<LOQ	
Endo Fenchyl Alcohol	0.87	0.09					
				<b>Total Terpenes</b>	<b>28.56</b>	<b>2.86</b>	



Project **MEDICAL CANNABIS**  
Sample ID **21L06FLW003**  
Customer Name **788 TECHNOLOGIES**  
Sample Matrix **FLOWER**  
Strain/Description **PRIMOTIVO OG**

Batch ID **G21326F-130-DAAA**  
Date Sampled **12/6/2021**  
Sampling Method **CUSTOMER SUPPLIED**  
Quantity Received **3.05**  
Date Completed **12/8/2021**

<b>Pesticides</b>			<b>Residual Solvents</b>			
	ppm	Pass/Fail		%	ppm	Pass/Fail
Imidacloprid [0.4ppm]	<b>NT</b>	<b>NT</b>	Acetone [1000ppm]	<b>NT</b>	<b>NT</b>	<b>NT</b>
Imazalil [0.2ppm]	<b>NT</b>	<b>NT</b>	Benzene [2ppm]	<b>NT</b>	<b>NT</b>	<b>NT</b>
Myclobutanil [0.2ppm]	<b>NT</b>	<b>NT</b>	Butanes [1000ppm]	<b>NT</b>	<b>NT</b>	<b>NT</b>
Malathion [0.2ppm]	<b>NT</b>	<b>NT</b>	Heptanes [1000ppm]	<b>NT</b>	<b>NT</b>	<b>NT</b>
Azoxystrobin [0.2ppm]	<b>NT</b>	<b>NT</b>	Hexane [60ppm]	<b>NT</b>	<b>NT</b>	<b>NT</b>
Bifenazate[0.2ppm]	<b>NT</b>	<b>NT</b>	Isopropyl Alcohol [1000ppm]	<b>NT</b>	<b>NT</b>	<b>NT</b>
Spirotetramat [0.2ppm]	<b>NT</b>	<b>NT</b>	Pentane [1000ppm]	<b>NT</b>	<b>NT</b>	<b>NT</b>
Tebuconazole [0.4ppm]	<b>NT</b>	<b>NT</b>	Propane [1000ppm]	<b>NT</b>	<b>NT</b>	<b>NT</b>
Spinosad [0.2ppm]	<b>NT</b>	<b>NT</b>	Toluene [180ppm]	<b>NT</b>	<b>NT</b>	<b>NT</b>
Abamectin [0.5ppm]	<b>NT</b>	<b>NT</b>	Xylenes [430ppm]	<b>NT</b>	<b>NT</b>	<b>NT</b>
Spiromesifen [0.2ppm]	<b>NT</b>	<b>NT</b>	Methanol [600ppm]	<b>NT</b>	<b>NT</b>	<b>NT</b>
Etoxazole [0.2ppm]	<b>NT</b>	<b>NT</b>	Ethyl Acetate [1000ppm]	<b>NT</b>	<b>NT</b>	<b>NT</b>
Permethrin [0.2ppm]	<b>NT</b>	<b>NT</b>	Ethanol [5000ppm]	<b>NT</b>	<b>NT</b>	<b>NT</b>

**Other Detected Solvents**

<b>Heavy Metals</b>			<b>Microbiology</b>		
	ppm	Pass/Fail		CFU/g	Pass/Fail
Arsenic [0.2ppm]	<b>NT</b>	<b>NT</b>	STEC E. Coli [1cfu/g]	<b>NT</b>	<b>NT</b>
Cadmium [0.2ppm]	<b>NT</b>	<b>NT</b>	Salmonella [1cfu/g]	<b>NT</b>	<b>NT</b>
Lead [0.5ppm]	<b>NT</b>	<b>NT</b>	Aspergillus [1cfu/g]	<b>NT</b>	<b>NT</b>
Mercury [0.1ppm]	<b>NT</b>	<b>NT</b>	Total Mold and Yeast [10,000cfu/g]	<b>NT</b>	<b>NT</b>

<b>Mycotoxins</b>			<b>Microscopic Inspection</b>		
	ppb	Pass/Fail		Amount	Pass/Fail
Aflatoxin B1	<b>NT</b>	<b>NT</b>	Foreign Matter	<b>ND</b>	<b>PASS</b>
Aflatoxin B2	<b>NT</b>	<b>NT</b>	Contaminants	<b>ND</b>	<b>PASS</b>
Aflatoxin G1	<b>NT</b>	<b>NT</b>	Other	<b>ND</b>	<b>PASS</b>
Aflatoxin G2	<b>NT</b>	<b>NT</b>			
Ochratoxin	<b>NT</b>	<b>NT</b>			
Total [20ppb]	<b>NT</b>	<b>NT</b>			

	Amount	Pass/Fail
<b>Water Activity [0.65aW]</b>	<b>0.49</b>	<b>PASS</b>
<b>Moisture Content [15%]</b>	<b>9.5</b>	<b>PASS</b>

Project **MEDICAL CANNABIS**  
Sample ID **21L06FLW003**  
Customer Name **788 TECHNOLOGIES**  
Sample Matrix **FLOWER**  
Strain/Description **PRIMOTIVO OG**

Batch ID **G21326F-130-DAAA**  
Date Sampled **12/6/2021**  
Sampling Method **CUSTOMER SUPPLIED**  
Quantity Received **3.05**  
Date Completed **12/8/2021**

Method References:

Analysis	Method	Instrument	RL	Test Date	Analyst
Cannabinoids	SOP-CANFC	Agilent 1260 HPLC-UV	1mg/g	12/6/2021	MSC
Terpenes	SOP-TER	Agilent Intuvo HS-GC	0.1mg/g	12/7/2021	MSC
Water Activity	SOP-WA	Rotronics WA Meter	N/A	12/6/2021	MSC
Residual Solvents	SOP-RES	Agilent Intuvo HS-GC	Benzene 1 ppm; Others 30 ppm	NT	NT
STEC E. Coli/Salmonella	qPCR Protocol	Agilent AriaMx QPCR	1 CFU/g	NT	NT
Aspergillus	qPCR Protocol	Agilent AriaMx QPCR	1 CFU/g	NT	NT
Molds and Yeast	qPCR Protocol	Agilent AriaMx QPCR	1 CFU/g	NT	NT
Heavy Metals	EPA 6010D/7471B	AGILENT ICP-OES	As, Cd, Pb 25 ppb; Hg 10 ppb	NT	NT
Pesticides	CBL Method 2	AGILENT LC-MS-MS	0.05 ppm	NT	NT
Mycotoxins	SOP-CBMX	AGILENT LC-MS-MS	2.5ppb	NT	NT
Microscopic Inspection	SOP-INS	Stereo Microscope	N/A	12/6/2021	MSC

\*Any sample not collected by 405 Analytical LLC trained samplers is "TESTED as received."

\*Recoveries for all analyte standards: 90%-110% | Duplicate Recoveries <30%RPD | Blanks <BDL for all analytes.

\*This data is provided as a service and makes no claims of efficacy or safety of product.

\*405 Analytical LLC reserves the right to sub-contract work on an "as needed" basis to an accredited lab.

\*This Certificate of Analysis shall only be reproduced in its full form and shall not be modified way.

RL - Reporting Limit

LOQ - Limit of Quantitation

ND - Not detected above reporting limit

NT - Not tested

[ ] - Bracketed values are legal not-to-exceed limits

HG = Completed by Highgrade Labs

RPD - Relative Percent Difference

BDL - Below Detection Limit

*Dr. Mark Clemenson*  
Laboratory Director

*Krystal L Tilson*  
Quality Assurance Manager/Chemist