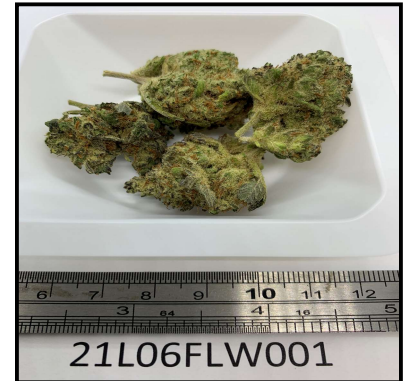




351 N Air Depot Blvd, Ste. C
Midwest City, Oklahoma, 73110
Questions@405analytical.com
(405) 548-5734

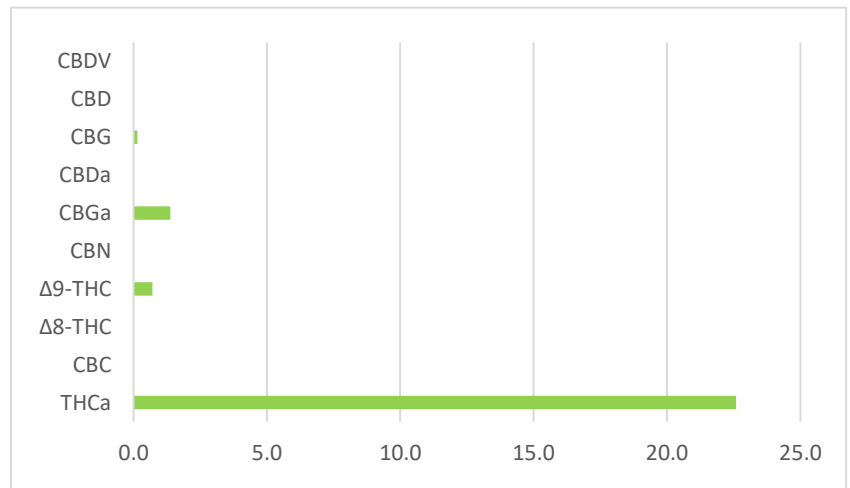
CERTIFICATE OF ANALYSIS

Project **MEDICAL CANNABIS**
 Sample ID **21L06FLW001**
 Customer Name **788 TECHNOLOGIES**
 Customer License **GAAA-NJUN-ZIFB**
 Sample Matrix **FLOWER**
 Strain/Description **CHAMPAGNE MINTS**
 Customer Batch ID **G21326F-129-DAAA**
 Date Sampled **12/6/2021**
 Sampling Method **CUSTOMER SUPPLIED**
 Quantity Received (g) **3.79**
 Date Completed **12/8/2021**



Total % THC	Total % CBD	Total % Terpenes
20.53	<LOQ	2.17

Cannabinoids	mg/g	%
CBDV	<LOQ	<LOQ
CBD	<LOQ	<LOQ
CBG	1.48	0.15
CBDa	<LOQ	<LOQ
CBGa	13.85	1.39
CBN	<LOQ	<LOQ
Δ9-THC	7.12	0.71
Δ8-THC	<LOQ	<LOQ
CBC	<LOQ	<LOQ
THCa	225.99	22.60
Total Cannabinoids	248.44	24.84



Total THC%=(0.877xTHCa%) + Δ9-THC%

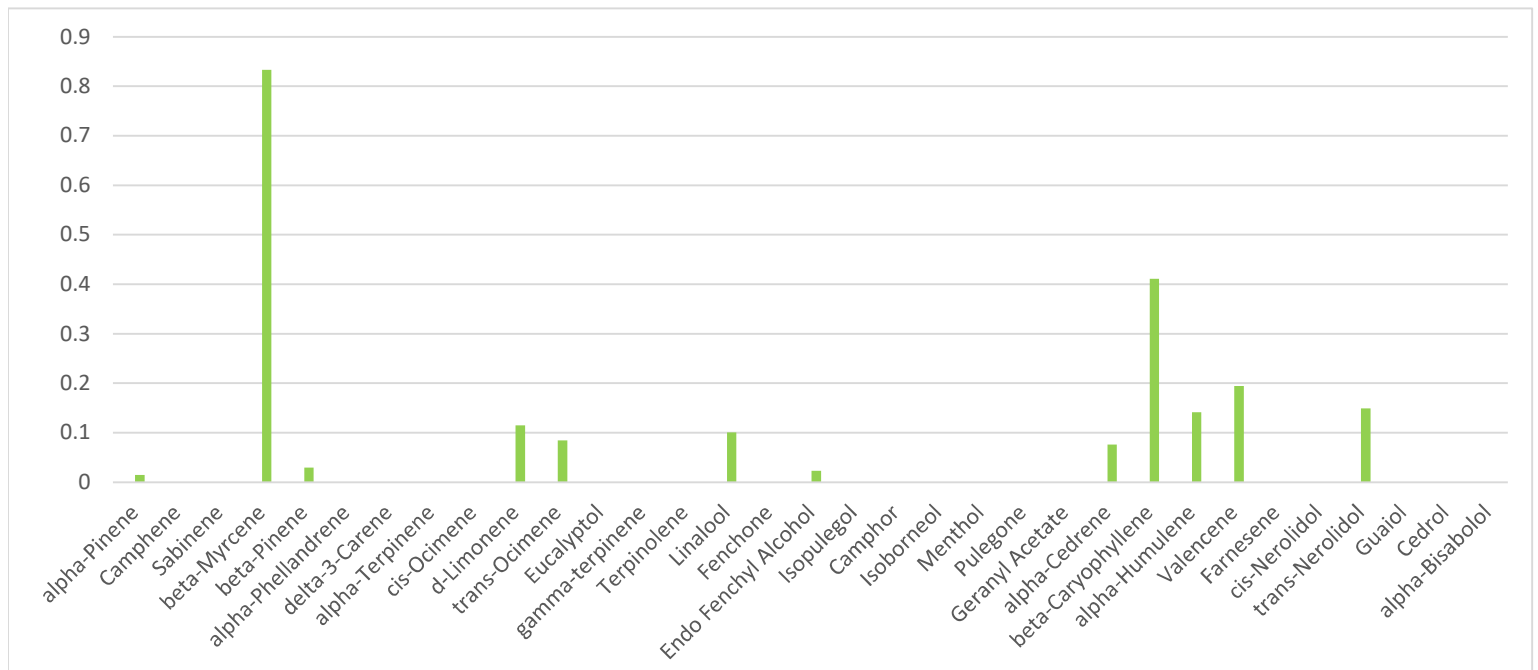
Total CBD%=(0.877xCBDa%) + CBD%

Total THC prod=NetWt(g) x mgTHC

Project **MEDICAL CANNABIS**
 Sample ID **21L06FLW001**
 Customer Name **788 TECHNOLOGIES**
 Sample Matrix **FLOWER**
 Strain/Description **CHAMPAGNE MINTS**

Batch ID **G21326F-129-DAAA**
 Date Sampled **12/6/2021**
 Sampling Method **CUSTOMER SUPPLIED**
 Quantity Received **3.79**
 Date Completed **12/8/2021**

Terpenes	mg/g	%	Terpenes	mg/g	%
alpha-Pinene	0.15	0.01	Isopulegol	<LOQ	<LOQ
Camphene	<LOQ	<LOQ	Camphor	<LOQ	<LOQ
Sabinene	<LOQ	<LOQ	Isoborneol	<LOQ	<LOQ
beta-Myrcene	8.33	0.83	Menthol	<LOQ	<LOQ
beta-Pinene	0.30	0.03	Pulegone	<LOQ	<LOQ
alpha-Phellandrene	<LOQ	<LOQ	Geranyl Acetate	<LOQ	<LOQ
delta-3-Carene	<LOQ	<LOQ	alpha-Cedrene	0.76	0.08
alpha-Terpinene	<LOQ	<LOQ	beta-Caryophyllene	4.11	0.41
cis-Ocimene	<LOQ	<LOQ	alpha-Humulene	1.41	0.14
d-Limonene	1.15	0.12	Valencene	1.95	0.19
trans-Ocimene	0.84	0.08	Farnesene	<LOQ	<LOQ
Eucalyptol	<LOQ	<LOQ	cis-Nerolidol	<LOQ	<LOQ
gamma-terpinene	<LOQ	<LOQ	trans-Nerolidol	1.49	0.15
Terpinolene	<LOQ	<LOQ	Guaiol	<LOQ	<LOQ
Linalool	1.01	0.10	Cedrol	<LOQ	<LOQ
Fenchone	<LOQ	<LOQ	alpha-Bisabolol	<LOQ	<LOQ
Endo Fenchyl Alcohol	0.23	0.02			
			Total Terpenes	21.73	2.17



Project **MEDICAL CANNABIS**
Sample ID **21L06FLW001**
Customer Name **788 TECHNOLOGIES**
Sample Matrix **FLOWER**
Strain/Description **CHAMPAGNE MINTS**

Batch ID **G21326F-129-DAAA**
Date Sampled **12/6/2021**
Sampling Method **CUSTOMER SUPPLIED**
Quantity Received **3.79**
Date Completed **12/8/2021**

Pesticides			Residual Solvents			
	ppm	Pass/Fail		%	ppm	Pass/Fail
Imidacloprid [0.4ppm]	NT	NT	Acetone [1000ppm]	NT	NT	NT
Imazalil [0.2ppm]	NT	NT	Benzene [2ppm]	NT	NT	NT
Myclobutanil [0.2ppm]	NT	NT	Butanes [1000ppm]	NT	NT	NT
Malathion [0.2ppm]	NT	NT	Heptanes [1000ppm]	NT	NT	NT
Azoxystrobin [0.2ppm]	NT	NT	Hexane [60ppm]	NT	NT	NT
Bifenazate[0.2ppm]	NT	NT	Isopropyl Alcohol [1000ppm]	NT	NT	NT
Spirotetramat [0.2ppm]	NT	NT	Pentane [1000ppm]	NT	NT	NT
Tebuconazole [0.4ppm]	NT	NT	Propane [1000ppm]	NT	NT	NT
Spinosad [0.2ppm]	NT	NT	Toluene [180ppm]	NT	NT	NT
Abamectin [0.5ppm]	NT	NT	Xylenes [430ppm]	NT	NT	NT
Spiromesifen [0.2ppm]	NT	NT	Methanol [600ppm]	NT	NT	NT
Etoxazole [0.2ppm]	NT	NT	Ethyl Acetate [1000ppm]	NT	NT	NT
Permethrin [0.2ppm]	NT	NT	Ethanol [5000ppm]	NT	NT	NT

Other Detected Solvents

Heavy Metals			Microbiology		
	ppm	Pass/Fail		CFU/g	Pass/Fail
Arsenic [0.2ppm]	NT	NT	STEC E. Coli [1cfu/g]	NT	NT
Cadmium [0.2ppm]	NT	NT	Salmonella [1cfu/g]	NT	NT
Lead [0.5ppm]	NT	NT	Aspergillus [1cfu/g]	NT	NT
Mercury [0.1ppm]	NT	NT	Total Mold and Yeast [10,000cfu/g]	NT	NT

Mycotoxins			Microscopic Inspection		
	ppb	Pass/Fail		Amount	Pass/Fail
Aflatoxin B1	NT	NT	Foreign Matter	ND	PASS
Aflatoxin B2	NT	NT	Contaminants	ND	PASS
Aflatoxin G1	NT	NT	Other	ND	PASS
Aflatoxin G2	NT	NT			
Ochratoxin	NT	NT			
Total [20ppb]	NT	NT			

	Amount	Pass/Fail
Water Activity [0.65aW]	0.48	PASS
Moisture Content [15%]	9.4	PASS

Project **MEDICAL CANNABIS**
Sample ID **21L06FLW001**
Customer Name **788 TECHNOLOGIES**
Sample Matrix **FLOWER**
Strain/Description **CHAMPAGNE MINTS**

Batch ID **G21326F-129-DAAA**
Date Sampled **12/6/2021**
Sampling Method **CUSTOMER SUPPLIED**
Quantity Received **3.79**
Date Completed **12/8/2021**

Method References:

Analysis	Method	Instrument	RL	Test Date	Analyst
Cannabinoids	SOP-CANFC	Agilent 1260 HPLC-UV	1mg/g	12/6/2021	MSC
Terpenes	SOP-TER	Agilent Intuvo HS-GC	0.1mg/g	12/7/2021	MSC
Water Activity	SOP-WA	Rotronics WA Meter	N/A	12/6/2021	MSC
Residual Solvents	SOP-RES	Agilent Intuvo HS-GC	Benzene 1 ppm; Others 30 ppm	NT	NT
STEC E. Coli/Salmonella	qPCR Protocol	Agilent AriaMx QPCR	1 CFU/g	NT	NT
Aspergillus	qPCR Protocol	Agilent AriaMx QPCR	1 CFU/g	NT	NT
Molds and Yeast	qPCR Protocol	Agilent AriaMx QPCR	1 CFU/g	NT	NT
Heavy Metals	EPA 6010D/7471B	AGILENT ICP-OES	As, Cd, Pb 25 ppb; Hg 10 ppb	NT	NT
Pesticides	CBL Method 2	AGILENT LC-MS-MS	0.05 ppm	NT	NT
Mycotoxins	SOP-CBMX	AGILENT LC-MS-MS	2.5ppb	NT	NT
Microscopic Inspection	SOP-INS	Stereo Microscope	N/A	12/6/2021	MSC

*Any sample not collected by 405 Analytical LLC trained samplers is "TESTED as received."

*Recoveries for all analyte standards: 90%-110% | Duplicate Recoveries <30%RPD | Blanks <BDL for all analytes.

*This data is provided as a service and makes no claims of efficacy or safety of product.

*405 Analytical LLC reserves the right to sub-contract work on an "as needed" basis to an accredited lab.

*This Certificate of Analysis shall only be reproduced in its full form and shall not be modified way.

RL - Reporting Limit

LOQ - Limit of Quantitation

ND - Not detected above reporting limit

NT - Not tested

[] - Bracketed values are legal not-to-exceed limits

HG = Completed by Highgrade Labs

RPD - Relative Percent Difference

BDL - Below Detection Limit

Dr. Mark Clemenson
Laboratory Director

Krystal L Tilson
Quality Assurance Manager/Chemist